



Customer: **8DELTA8**
 Customer Sample ID: **.5g Disposable - Strawberry Lemonade**
 Laboratory Number: **21K0661-01**



Cannabinoid Profile

Extraction Technician: DF
 Analytical Chemist: SH

Extraction Date(s)	Analysis Date(s)
12/8/2020	12/8/2020

Cannabinoids (HPLC)		Results	
	LOD (mg/g)		mg/g
Cannabidiol (CBD)	<0.80		
Cannabidiolol (CBD-A)	<0.80		
Cannabigerol (CBG)	<0.80		
Cannabigerolol (CBG-A)	<0.80		
Cannabidiololol (CBDV)	<0.80		
Tetrahydrocannabivarin (THCV)	<0.80		
Cannabinol (CBN)	<0.80		
delta 9-Tetrahydrocannabinol (THC)	<0.80		
delta 8-Tetrahydrocannabinol		93.41	934
Cannabichromene (CBC)	<0.80		
delta-9-Tetrahydrocannabinolic Acid (THC-A)	<0.80		
Cannabinoids Total		%	mg/g
Max Active THC		0.00	0.00
Max Active CBD		0.00	0.00
T.Active Cannabinoids		0.00	0.00
Total Cannabinoids		93.40	934.00

Following USDA guidelines on uncertainty, Altitude Consulting's uncertainty are calculated for CBDa and CBD at +/- 4%. The uncertainty for THCa and THC are +/- 5%. This implies the range for a 10% value of CBD to be 9.6-10.4%. The uncertainty range for a 0.30% value of THC would be 0.28-0.32%. The measurement uncertainty is calculated using a coverage factor of 2.

Cannabinoid (mg/g)



Cannabichromene (CBC)	Cannabidiol (CBD)	Cannabidiolol (CBD-A)	Cannabidiololol (CBDV)	Cannabigerol (CBG)
Cannabigerolol (CBG-A)	Cannabinol (CBN)	delta 8-Tetrahydrocannabinol	delta 9-Tetrahydrocannabinol (THC)	delta-9-Tetrahydrocannabinolic Acid (THC-A)
Tetrahydrocannabivarin (THCV)				

Reporting Limits will vary based on sample extraction weight used for the analysis.

Altitude Consulting, LLC utilizes NIST traceable Reference Standards and Certified Reference Material to calibrate analytical instruments along with proven analytical methods. The methods are applied in the most ethical manner following good laboratory practice guidelines. The results of this report are based solely on the sample submitted and cannot be reproduced.



Customer: **8DELTA8**
Customer Sample ID: **.5g Disposable - Blue Dream**
Laboratory Number: **21K0661-02**



Cannabinoid Profile

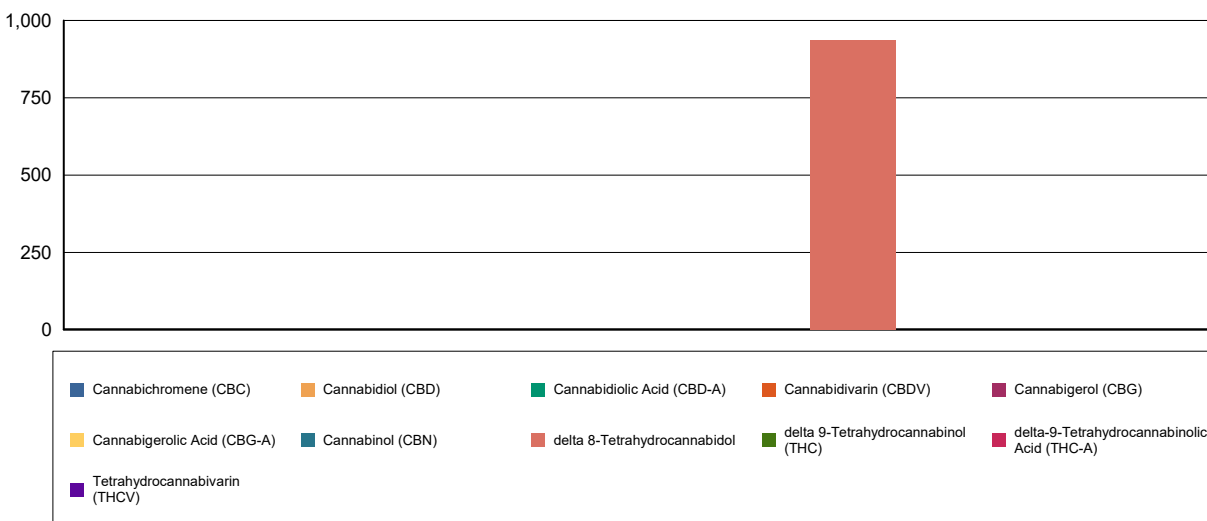
Extraction Technician: DF
Analytical Chemist: SH

Extraction Date(s)	Analysis Date(s)
12/8/2020	12/8/2020

Cannabinoids (HPLC)		Results	
	LOD (mg/g)	%	mg/g
Cannabidivarin (CBDV)	<0.60		
Cannabidiolic Acid (CBD-A)	<0.60		
Cannabigerolic Acid (CBG-A)	<0.60		
Cannabigerol (CBG)	<0.60		
Cannabidiol (CBD)	<0.60		
Tetrahydrocannabivarin (THCV)	<0.60		
Cannabinol (CBN)	<0.60		
delta 9-Tetrahydrocannabinol (THC)	<0.60		
delta 8-Tetrahydrocannabinol		92.11	921
Cannabichromene (CBC)	<0.60		
delta-9-Tetrahydrocannabinolic Acid (THC-A)	<0.60		
Cannabinoids Total		%	mg/g
Max Active THC		0.00	0.00
Max Active CBD		0.00	0.00
T.Active Cannabinoids		0.00	0.00
Total Cannabinoids		92.10	921.00

Following USDA guidelines on uncertainty, Altitude Consulting's uncertainty are calculated for CBDa and CBD at +/- 4%. The uncertainty for THCa and THC are +/- 5%. This implies the range for a 10% value of CBD to be 9.6-10.4%. The uncertainty range for a 0.30% value of THC would be 0.28-0.32%. The measurement uncertainty is calculated using a coverage factor of 2.

Cannabinoid (mg/g)



Reporting Limits will vary based on sample extraction weight used for the analysis.

Altitude Consulting, LLC utilizes NIST traceable Reference Standards and Certified Reference Material to calibrate analytical instruments along with proven analytical methods. The methods are applied in the most ethical manner following good laboratory practice guidelines. The results of this report are based solely on the sample submitted and cannot be reproduced.



Customer: **8DELTA8**
Customer Sample ID: **.5g Disposable - Bubba Kush**
Laboratory Number: **21K0661-03**



Cannabinoid Profile

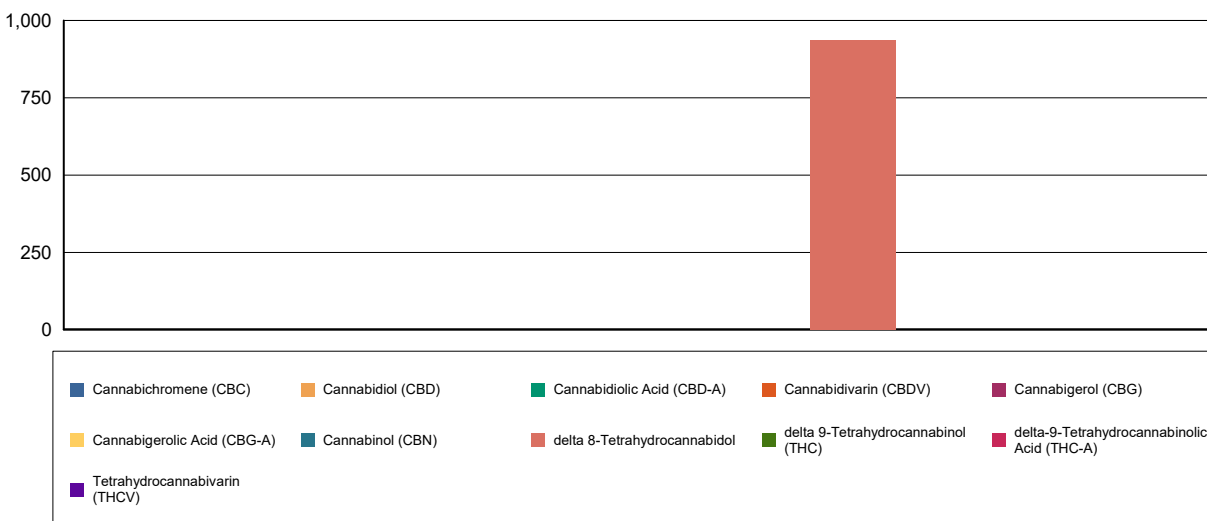
Extraction Technician: DF
Analytical Chemist: SH

Extraction Date(s)	Analysis Date(s)
12/8/2020	12/8/2020

Cannabinoids (HPLC)		Results	
	LOD (mg/g)	%	mg/g
Cannabidivarin (CBDV)	<0.70		
Cannabidiolic Acid (CBD-A)	<0.70		
Cannabigerolic Acid (CBG-A)	<0.70		
Cannabigerol (CBG)	<0.70		
Cannabidiol (CBD)	<0.70		
Tetrahydrocannabivarin (THCV)	<0.70		
Cannabinol (CBN)	<0.70		
delta 9-Tetrahydrocannabinol (THC)	<0.70		
delta 8-Tetrahydrocannabinol		92.31	923
Cannabichromene (CBC)	<0.70		
delta-9-Tetrahydrocannabinolic Acid (THC-A)	<0.70		
Cannabinoids Total		%	mg/g
Max Active THC		0.00	0.00
Max Active CBD		0.00	0.00
T.Active Cannabinoids		0.00	0.00
Total Cannabinoids		92.30	923.00

Following USDA guidelines on uncertainty, Altitude Consulting's uncertainty are calculated for CBDa and CBD at +/- 4%. The uncertainty for THCa and THC are +/- 5%. This implies the range for a 10% value of CBD to be 9.6-10.4%. The uncertainty range for a 0.30% value of THC would be 0.28-0.32%. The measurement uncertainty is calculated using a coverage factor of 2.

Cannabinoid (mg/g)



Reporting Limits will vary based on sample extraction weight used for the analysis.

Altitude Consulting, LLC utilizes NIST traceable Reference Standards and Certified Reference Material to calibrate analytical instruments along with proven analytical methods. The methods are applied in the most ethical manner following good laboratory practice guidelines. The results of this report are based solely on the sample submitted and cannot be reproduced.



Customer: **8DELTA8**
Customer Sample ID: **.5g Disposable - Mango Kush**
Laboratory Number: **21K0661-04**



Cannabinoid Profile

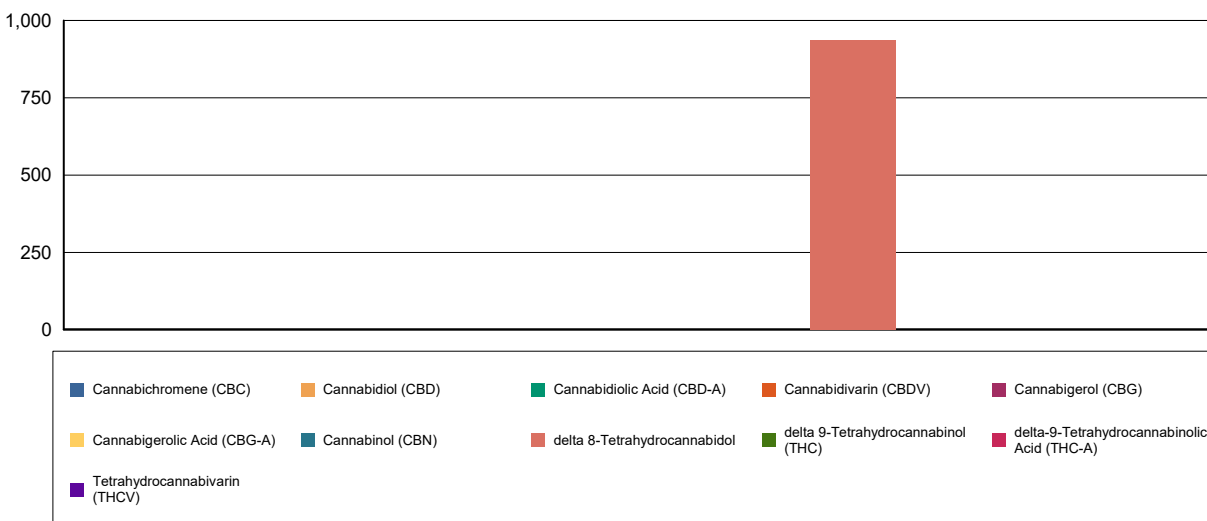
Extraction Technician: DF
Analytical Chemist: SH

Extraction Date(s)	Analysis Date(s)
12/8/2020	12/8/2020

Cannabinoids (HPLC)		Results	
	LOD (mg/g)	%	mg/g
Cannabidivarin (CBDV)	<0.60		
Cannabidiolic Acid (CBD-A)	<0.60		
Cannabigerolic Acid (CBG-A)	<0.60		
Cannabigerol (CBG)	<0.60		
Cannabidiol (CBD)	<0.60		
Tetrahydrocannabivarin (THCV)	<0.60		
Cannabinol (CBN)	<0.60		
delta 9-Tetrahydrocannabinol (THC)	<0.60		
delta 8-Tetrahydrocannabinol		92.76	928
Cannabichromene (CBC)	<0.60		
delta-9-Tetrahydrocannabinolic Acid (THC-A)	<0.60		
Cannabinoids Total		%	mg/g
Max Active THC		0.00	0.00
Max Active CBD		0.00	0.00
T.Active Cannabinoids		0.00	0.00
Total Cannabinoids		92.80	928.00

Following USDA guidelines on uncertainty, Altitude Consulting's uncertainty are calculated for CBDa and CBD at +/- 4%. The uncertainty for THCa and THC are +/- 5%. This implies the range for a 10% value of CBD to be 9.6-10.4%. The uncertainty range for a 0.30% value of THC would be 0.28-0.32%. The measurement uncertainty is calculated using a coverage factor of 2.

Cannabinoid (mg/g)



Reporting Limits will vary based on sample extraction weight used for the analysis.

Altitude Consulting, LLC utilizes NIST traceable Reference Standards and Certified Reference Material to calibrate analytical instruments along with proven analytical methods. The methods are applied in the most ethical manner following good laboratory practice guidelines. The results of this report are based solely on the sample submitted and cannot be reproduced.



Customer: **8DELTA8**
Customer Sample ID: **.5g Disposable - Guava**
Laboratory Number: **21K0661-05**



Cannabinoid Profile

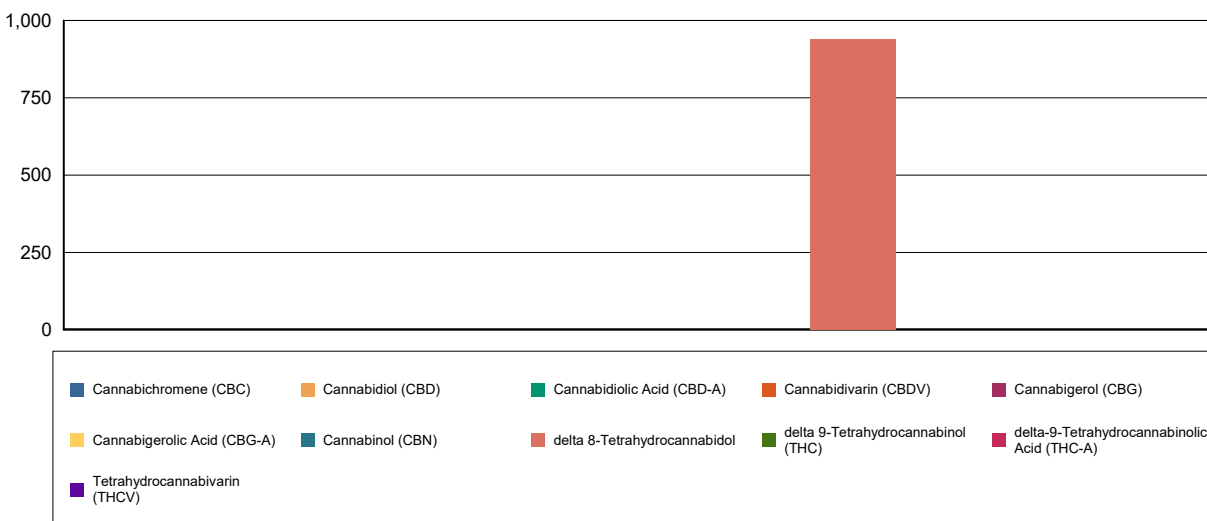
Extraction Technician: DF
Analytical Chemist: SH

Extraction Date(s)	Analysis Date(s)
12/8/2020	12/8/2020

Cannabinoids (HPLC)		Results	
	LOD (mg/g)	%	mg/g
Cannabidivarin (CBDV)	<0.60		
Cannabidiolic Acid (CBD-A)	<0.60		
Cannabigerolic Acid (CBG-A)	<0.60		
Cannabigerol (CBG)	<0.60		
Cannabidiol (CBD)	<0.60		
Tetrahydrocannabivarin (THCV)	<0.60		
Cannabinol (CBN)	<0.60		
delta 9-Tetrahydrocannabinol (THC)	<0.60		
delta 8-Tetrahydrocannabinol		91.82	918
Cannabichromene (CBC)	<0.60		
delta-9-Tetrahydrocannabinolic Acid (THC-A)	<0.60		
Cannabinoids Total		%	mg/g
Max Active THC		0.00	0.00
Max Active CBD		0.00	0.00
T.Active Cannabinoids		0.00	0.00
Total Cannabinoids		91.80	918.00

Following USDA guidelines on uncertainty, Altitude Consulting's uncertainty are calculated for CBDa and CBD at +/- 4%. The uncertainty for THCa and THC are +/- 5%. This implies the range for a 10% value of CBD to be 9.6-10.4%. The uncertainty range for a 0.30% value of THC would be 0.28-0.32%. The measurement uncertainty is calculated using a coverage factor of 2.

Cannabinoid (mg/g)



Reporting Limits will vary based on sample extraction weight used for the analysis.

Altitude Consulting, LLC utilizes NIST traceable Reference Standards and Certified Reference Material to calibrate analytical instruments along with proven analytical methods. The methods are applied in the most ethical manner following good laboratory practice guidelines. The results of this report are based solely on the sample submitted and cannot be reproduced.



Customer: **8DELTA8**
Customer Sample ID: **.5g Disposable - Runtz**
Laboratory Number: **21K0661-06**



Cannabinoid Profile

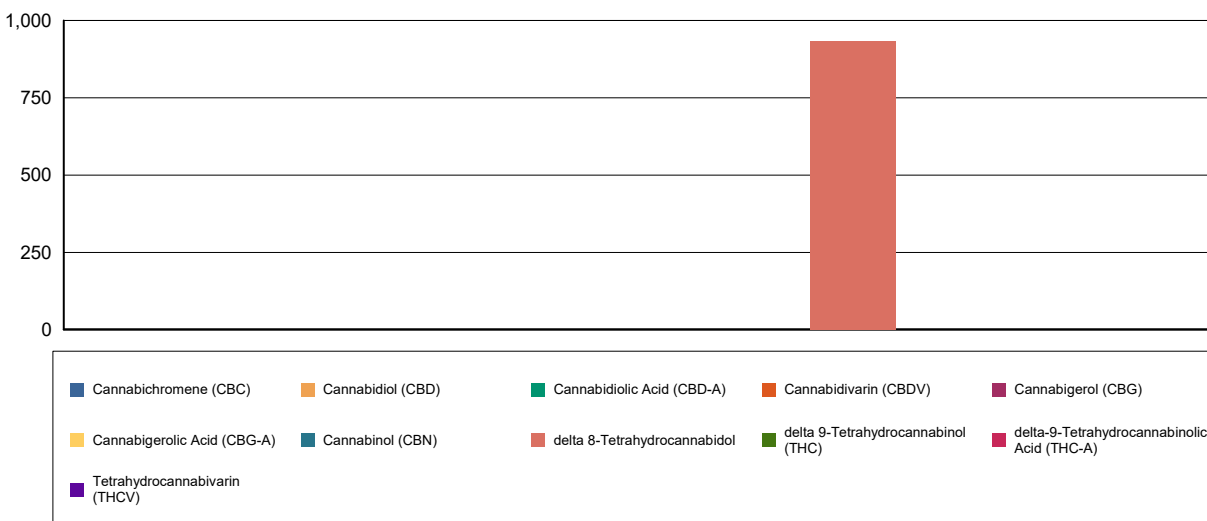
Extraction Technician: DF
Analytical Chemist: SH

Extraction Date(s)	Analysis Date(s)
12/8/2020	12/8/2020

Cannabinoids (HPLC)		Results	
	LOD (mg/g)	%	mg/g
Cannabidivarin (CBDV)	<0.70		
Cannabidiolic Acid (CBD-A)	<0.70		
Cannabigerolic Acid (CBG-A)	<0.70		
Cannabigerol (CBG)	<0.70		
Cannabidiol (CBD)	<0.70		
Tetrahydrocannabivarin (THCV)	<0.70		
Cannabinol (CBN)	<0.70		
delta 9-Tetrahydrocannabinol (THC)	<0.70		
delta 8-Tetrahydrocannabinol		93.08	931
Cannabichromene (CBC)	<0.70		
delta-9-Tetrahydrocannabinolic Acid (THC-A)	<0.70		
Cannabinoids Total		%	mg/g
Max Active THC		0.00	0.00
Max Active CBD		0.00	0.00
T.Active Cannabinoids		0.00	0.00
Total Cannabinoids		93.10	931.00

Following USDA guidelines on uncertainty, Altitude Consulting's uncertainty are calculated for CBDa and CBD at +/- 4%. The uncertainty for THCa and THC are +/- 5%. This implies the range for a 10% value of CBD to be 9.6-10.4%. The uncertainty range for a 0.30% value of THC would be 0.28-0.32%. The measurement uncertainty is calculated using a coverage factor of 2.

Cannabinoid (mg/g)



Reporting Limits will vary based on sample extraction weight used for the analysis.

Altitude Consulting, LLC utilizes NIST traceable Reference Standards and Certified Reference Material to calibrate analytical instruments along with proven analytical methods. The methods are applied in the most ethical manner following good laboratory practice guidelines. The results of this report are based solely on the sample submitted and cannot be reproduced.



Customer: **8DELTA8**
Customer Sample ID: **.5g Disposable - Green Crack**
Laboratory Number: **21K0661-07**



Cannabinoid Profile

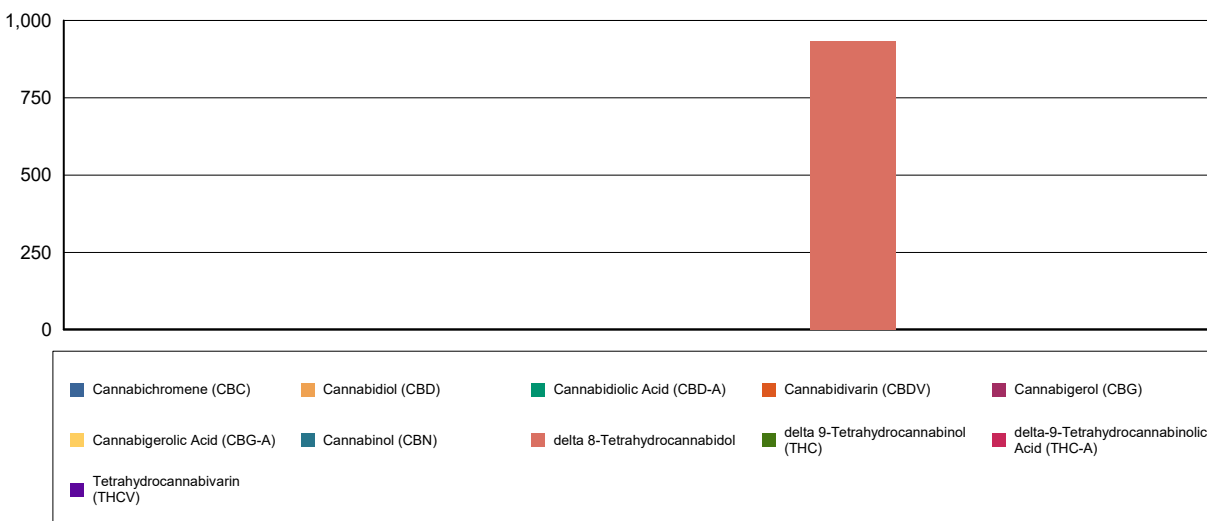
Extraction Technician: DF
Analytical Chemist: SH

Extraction Date(s)	Analysis Date(s)
12/8/2020	12/8/2020

Cannabinoids (HPLC)		Results	
	LOD (mg/g)	%	mg/g
Cannabidivarin (CBDV)	<0.60		
Cannabidiolic Acid (CBD-A)	<0.60		
Cannabigerolic Acid (CBG-A)	<0.60		
Cannabigerol (CBG)	<0.60		
Cannabidiol (CBD)	<0.60		
Tetrahydrocannabivarin (THCV)	<0.60		
Cannabinol (CBN)	<0.60		
delta 9-Tetrahydrocannabinol (THC)	<0.60		
delta 8-Tetrahydrocannabinol		92.79	928
Cannabichromene (CBC)	<0.60		
delta-9-Tetrahydrocannabinolic Acid (THC-A)	<0.60		
Cannabinoids Total		%	mg/g
Max Active THC		0.00	0.00
Max Active CBD		0.00	0.00
T.Active Cannabinoids		0.00	0.00
Total Cannabinoids		928.0	928.00

Following USDA guidelines on uncertainty, Altitude Consulting's uncertainty are calculated for CBDa and CBD at +/- 4%. The uncertainty for THCa and THC are +/- 5%. This implies the range for a 10% value of CBD to be 9.6-10.4%. The uncertainty range for a 0.30% value of THC would be 0.28-0.32%. The measurement uncertainty is calculated using a coverage factor of 2.

Cannabinoid (mg/g)



Reporting Limits will vary based on sample extraction weight used for the analysis.

Altitude Consulting, LLC utilizes NIST traceable Reference Standards and Certified Reference Material to calibrate analytical instruments along with proven analytical methods. The methods are applied in the most ethical manner following good laboratory practice guidelines. The results of this report are based solely on the sample submitted and cannot be reproduced.



Customer: **8DELTA8**
Customer Sample ID: **.5g Disposable - Girl Scout Cookie**
Laboratory Number: **21K0661-08**



Cannabinoid Profile

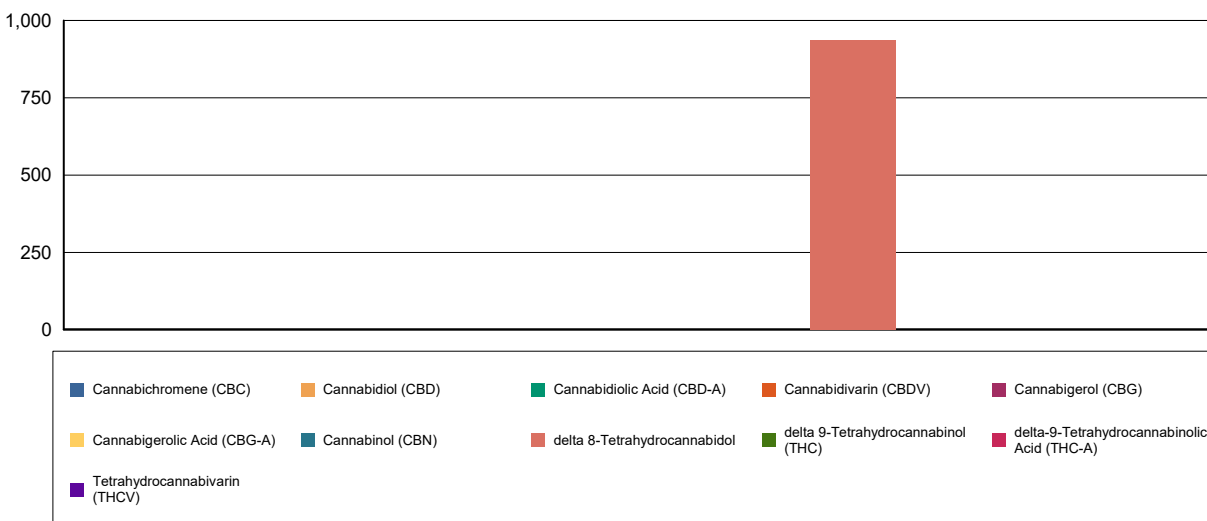
Extraction Technician: DF
Analytical Chemist: SH

Extraction Date(s)	Analysis Date(s)
12/8/2020	12/8/2020

Cannabinoids (HPLC)		Results	
	LOD (mg/g)		mg/g
Cannabidivarin (CBDV)	<0.80		
Cannabidiolic Acid (CBD-A)	<0.80		
Cannabigerolic Acid (CBG-A)	<0.80		
Cannabigerol (CBG)	<0.80		
Cannabidiol (CBD)	<0.80		
Tetrahydrocannabivarin (THCV)	<0.80		
Cannabinol (CBN)	<0.80		
delta 9-Tetrahydrocannabinol (THC)	<0.80		
delta 8-Tetrahydrocannabinol		94.31	943
Cannabichromene (CBC)	<0.80		
delta-9-Tetrahydrocannabinolic Acid (THC-A)	<0.80		
Cannabinoids Total		%	mg/g
Max Active THC		0.00	0.00
Max Active CBD		0.00	0.00
T.Active Cannabinoids		0.00	0.00
Total Cannabinoids		94.30	943.00

Following USDA guidelines on uncertainty, Altitude Consulting's uncertainty are calculated for CBDa and CBD at +/- 4%. The uncertainty for THCa and THC are +/- 5%. This implies the range for a 10% value of CBD to be 9.6-10.4%. The uncertainty range for a 0.30% value of THC would be 0.28-0.32%. The measurement uncertainty is calculated using a coverage factor of 2.

Cannabinoid (mg/g)



Reporting Limits will vary based on sample extraction weight used for the analysis.

Altitude Consulting, LLC utilizes NIST traceable Reference Standards and Certified Reference Material to calibrate analytical instruments along with proven analytical methods. The methods are applied in the most ethical manner following good laboratory practice guidelines. The results of this report are based solely on the sample submitted and cannot be reproduced.



Customer: **8DELTA8**
Customer Sample ID: **.5g Disposable - Watermelon**
Laboratory Number: **21K0661-09**



Cannabinoid Profile

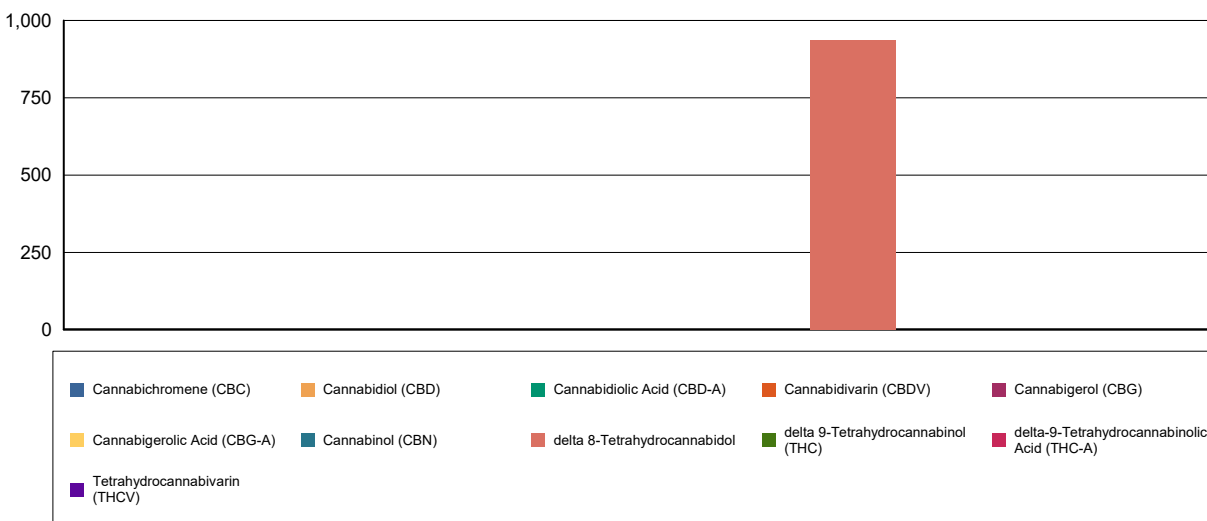
Extraction Technician: DF
Analytical Chemist: SH

Extraction Date(s)	Analysis Date(s)
12/8/2020	12/8/2020

Cannabinoids (HPLC)		Results	
	LOD (mg/g)	%	mg/g
Cannabidivarin (CBDV)	<0.70		
Cannabidiolic Acid (CBD-A)	<0.70		
Cannabigerolic Acid (CBG-A)	<0.70		
Cannabigerol (CBG)	<0.70		
Cannabidiol (CBD)	<0.70		
Tetrahydrocannabivarin (THCV)	<0.70		
Cannabinol (CBN)	<0.70		
delta 9-Tetrahydrocannabinol (THC)	<0.70		
delta 8-Tetrahydrocannabinol		92.67	927
Cannabichromene (CBC)	<0.70		
delta-9-Tetrahydrocannabinolic Acid (THC-A)	<0.70		
Cannabinoids Total		%	mg/g
Max Active THC		0.00	0.00
Max Active CBD		0.00	0.00
T.Active Cannabinoids		0.00	0.00
Total Cannabinoids		92.70	927.00

Following USDA guidelines on uncertainty, Altitude Consulting's uncertainty are calculated for CBDa and CBD at +/- 4%. The uncertainty for THCa and THC are +/- 5%. This implies the range for a 10% value of CBD to be 9.6-10.4%. The uncertainty range for a 0.30% value of THC would be 0.28-0.32%. The measurement uncertainty is calculated using a coverage factor of 2.

Cannabinoid (mg/g)



Reporting Limits will vary based on sample extraction weight used for the analysis.

Altitude Consulting, LLC utilizes NIST traceable Reference Standards and Certified Reference Material to calibrate analytical instruments along with proven analytical methods. The methods are applied in the most ethical manner following good laboratory practice guidelines. The results of this report are based solely on the sample submitted and cannot be reproduced.



Customer: **8DELTA8**
Customer Sample ID: **.5g Disposable - Pina Colada**
Laboratory Number: **21K0661-10**



Cannabinoid Profile

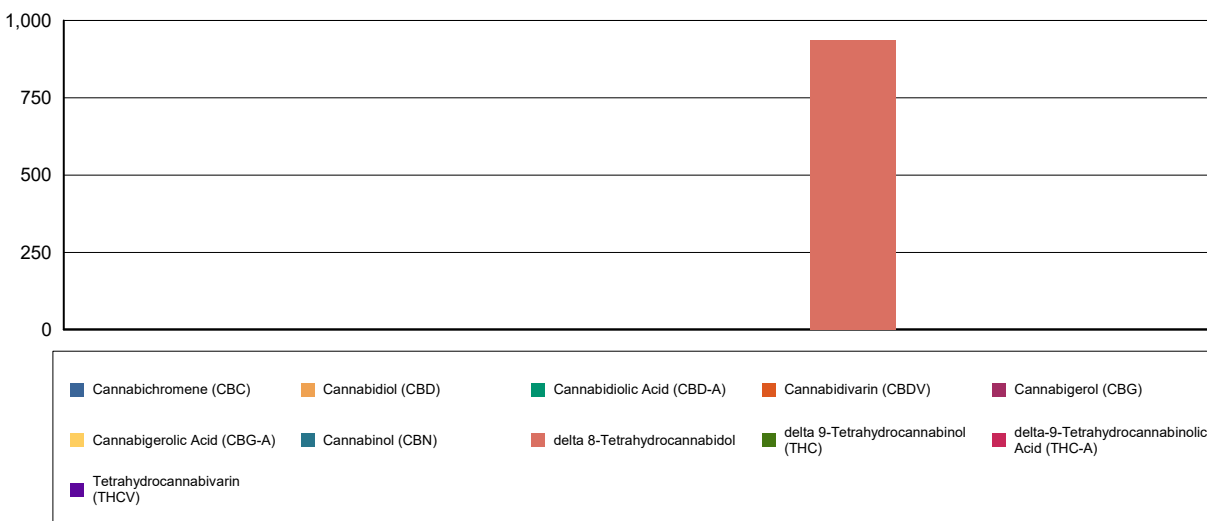
Extraction Technician: DF
Analytical Chemist: SH

Extraction Date(s)	Analysis Date(s)
12/8/2020	12/8/2020

Cannabinoids (HPLC)		Results	
	LOD (mg/g)	%	mg/g
Cannabidivarin (CBDV)	<0.80		
Cannabidiolic Acid (CBD-A)	<0.80		
Cannabigerolic Acid (CBG-A)	<0.80		
Cannabigerol (CBG)	<0.80		
Cannabidiol (CBD)	<0.80		
Tetrahydrocannabivarin (THCV)	<0.80		
Cannabinol (CBN)	<0.80		
delta 9-Tetrahydrocannabinol (THC)	<0.80		
delta 8-Tetrahydrocannabinol		94.08	941
Cannabichromene (CBC)	<0.80		
delta-9-Tetrahydrocannabinolic Acid (THC-A)	<0.80		
Cannabinoids Total		%	mg/g
Max Active THC		0.00	0.00
Max Active CBD		0.00	0.00
T.Active Cannabinoids		0.00	0.00
Total Cannabinoids		94.10	941.00

Following USDA guidelines on uncertainty, Altitude Consulting's uncertainty are calculated for CBDa and CBD at +/- 4%. The uncertainty for THCa and THC are +/- 5%. This implies the range for a 10% value of CBD to be 9.6-10.4%. The uncertainty range for a 0.30% value of THC would be 0.28-0.32%. The measurement uncertainty is calculated using a coverage factor of 2.

Cannabinoid (mg/g)



Reporting Limits will vary based on sample extraction weight used for the analysis.

Altitude Consulting, LLC utilizes NIST traceable Reference Standards and Certified Reference Material to calibrate analytical instruments along with proven analytical methods. The methods are applied in the most ethical manner following good laboratory practice guidelines. The results of this report are based solely on the sample submitted and cannot be reproduced.



Customer: **8DELTA8**
Customer Sample ID: **.5g Disposable - Wedding Cake**
Laboratory Number: **21K0661-11**



Cannabinoid Profile

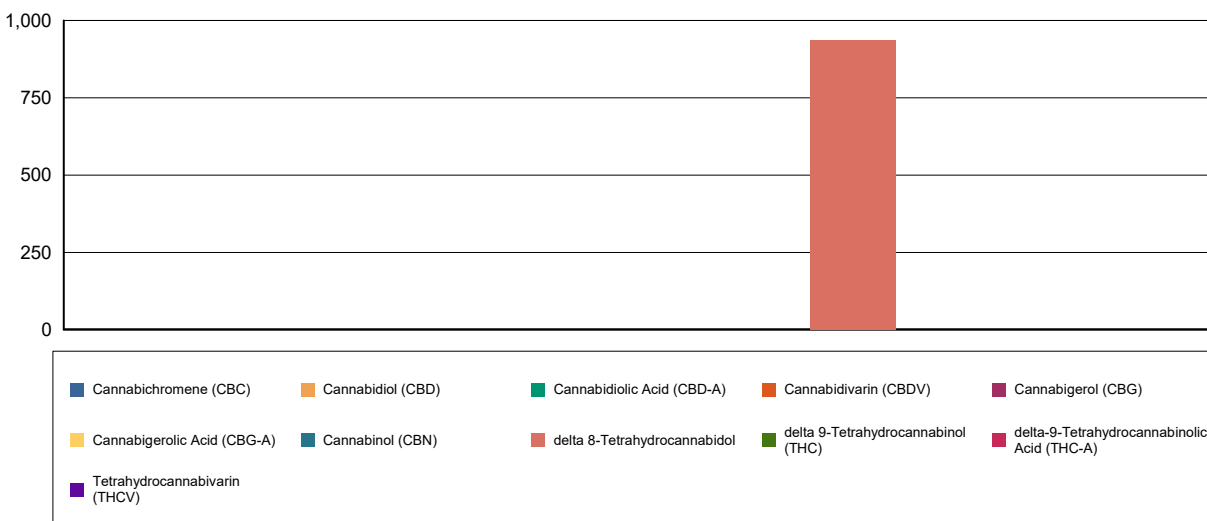
Extraction Technician: DF
Analytical Chemist: SH

Extraction Date(s)	Analysis Date(s)
12/8/2020	12/8/2020

Cannabinoids (HPLC)		Results	
	LOD (mg/g)	%	mg/g
Cannabidivarin (CBDV)	<0.60		
Cannabidiolic Acid (CBD-A)	<0.60		
Cannabigerolic Acid (CBG-A)	<0.60		
Cannabigerol (CBG)	<0.60		
Cannabidiol (CBD)	<0.60		
Tetrahydrocannabivarin (THCV)	<0.60		
Cannabinol (CBN)	<0.60		
delta 9-Tetrahydrocannabinol (THC)	<0.60		
delta 8-Tetrahydrocannabinol		92.24	922
Cannabichromene (CBC)	<0.60		
delta-9-Tetrahydrocannabinolic Acid (THC-A)	<0.60		
Cannabinoids Total		%	mg/g
Max Active THC		0.00	0.00
Max Active CBD		0.00	0.00
T.Active Cannabinoids		0.00	0.00
Total Cannabinoids		92.20	922.00

Following USDA guidelines on uncertainty, Altitude Consulting's uncertainty are calculated for CBDa and CBD at +/- 4%. The uncertainty for THCa and THC are +/- 5%. This implies the range for a 10% value of CBD to be 9.6-10.4%. The uncertainty range for a 0.30% value of THC would be 0.28-0.32%. The measurement uncertainty is calculated using a coverage factor of 2.

Cannabinoid (mg/g)



Reporting Limits will vary based on sample extraction weight used for the analysis.

Altitude Consulting, LLC utilizes NIST traceable Reference Standards and Certified Reference Material to calibrate analytical instruments along with proven analytical methods. The methods are applied in the most ethical manner following good laboratory practice guidelines. The results of this report are based solely on the sample submitted and cannot be reproduced.



Customer: **8DELTA8**
 Customer Sample ID: **.5g Disposable - Obama Kush**
 Laboratory Number: **21K0661-12**



Cannabinoid Profile

Extraction Technician: DF
 Analytical Chemist: SH

Extraction Date(s)	Analysis Date(s)
12/8/2020	12/8/2020

Cannabinoids (HPLC)		Results	
	LOD (mg/g)	%	mg/g
Cannabidiol (CBD)	<0.70		
Cannabidiolol (CBD-A)	<0.70		
Cannabigerol (CBG)	<0.70		
Cannabigerolol (CBG-A)	<0.70		
Cannabidiololol (THCV)	<0.70		
Cannabinol (CBN)	<0.70		
delta 9-Tetrahydrocannabinol (THC)	<0.70		
delta 8-Tetrahydrocannabinol		93.48	935
Cannabichromene (CBC)	<0.70		
delta-9-Tetrahydrocannabinolic Acid (THC-A)	<0.70		
Cannabinoids Total		%	mg/g
Max Active THC		0.00	0.00
Max Active CBD		0.00	0.00
T.Active Cannabinoids		0.00	0.00
Total Cannabinoids		93.50	935.00

Following USDA guidelines on uncertainty, Altitude Consulting's uncertainty are calculated for CBDa and CBD at +/- 4%. The uncertainty for THCa and THC are +/- 5%. This implies the range for a 10% value of CBD to be 9.6-10.4%. The uncertainty range for a 0.30% value of THC would be 0.28-0.32%. The measurement uncertainty is calculated using a coverage factor of 2.

Cannabinoid (mg/g)



Cannabichromene (CBC)	Cannabidiol (CBD)	Cannabidiolol (THCV)	Cannabidiololol (THC-A)	Cannabigerol (CBG)
Cannabigerolol (THC-A)	Cannabinol (CBN)	delta 8-Tetrahydrocannabinol	delta 9-Tetrahydrocannabinol (THC)	delta-9-Tetrahydrocannabinolic Acid (THC-A)

Reporting Limits will vary based on sample extraction weight used for the analysis.

Altitude Consulting, LLC utilizes NIST traceable Reference Standards and Certified Reference Material to calibrate analytical instruments along with proven analytical methods. The methods are applied in the most ethical manner following good laboratory practice guidelines. The results of this report are based solely on the sample submitted and cannot be reproduced.



Customer: **8DELTA8**
Customer Sample ID: **.5g Disposable - Gelato**
Laboratory Number: **21K0661-13**



Cannabinoid Profile

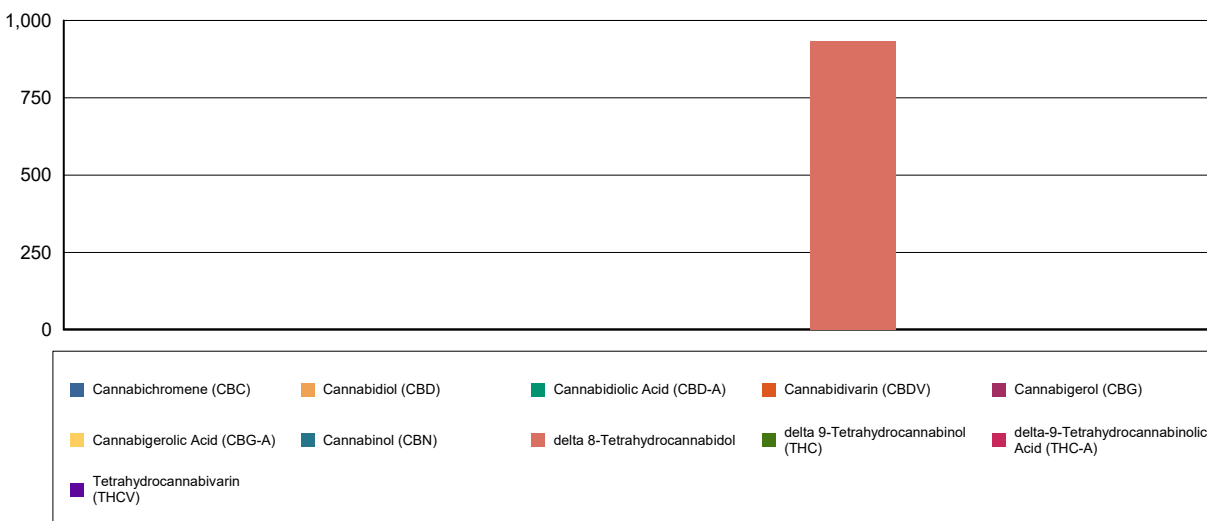
Extraction Technician: DF
Analytical Chemist: SH

Extraction Date(s)	Analysis Date(s)
12/8/2020	12/8/2020

Cannabinoids (HPLC)		Results	
	LOD (mg/g)	%	mg/g
Cannabidivarin (CBDV)	<0.70		
Cannabidiolic Acid (CBD-A)	<0.70		
Cannabigerolic Acid (CBG-A)	<0.70		
Cannabigerol (CBG)	<0.70		
Cannabidiol (CBD)	<0.70		
Tetrahydrocannabivarin (THCV)	<0.70		
Cannabinol (CBN)	<0.70		
delta 9-Tetrahydrocannabinol (THC)	<0.70		
delta 8-Tetrahydrocannabinol		93.93	939
Cannabichromene (CBC)	<0.70		
delta-9-Tetrahydrocannabinolic Acid (THC-A)	<0.70		
Cannabinoids Total		%	mg/g
Max Active THC		0.00	0.00
Max Active CBD		0.00	0.00
T.Active Cannabinoids		0.00	0.00
Total Cannabinoids		93.90	939.00

Following USDA guidelines on uncertainty, Altitude Consulting's uncertainty are calculated for CBDa and CBD at +/- 4%. The uncertainty for THCa and THC are +/- 5%. This implies the range for a 10% value of CBD to be 9.6-10.4%. The uncertainty range for a 0.30% value of THC would be 0.28-0.32%. The measurement uncertainty is calculated using a coverage factor of 2.

Cannabinoid (mg/g)



Reporting Limits will vary based on sample extraction weight used for the analysis.

Altitude Consulting, LLC utilizes NIST traceable Reference Standards and Certified Reference Material to calibrate analytical instruments along with proven analytical methods. The methods are applied in the most ethical manner following good laboratory practice guidelines. The results of this report are based solely on the sample submitted and cannot be reproduced.



Customer: **8DELTA8**
Customer Sample ID: **.5g Disposable - Lemon Haze**
Laboratory Number: **21K0661-14**



Cannabinoid Profile

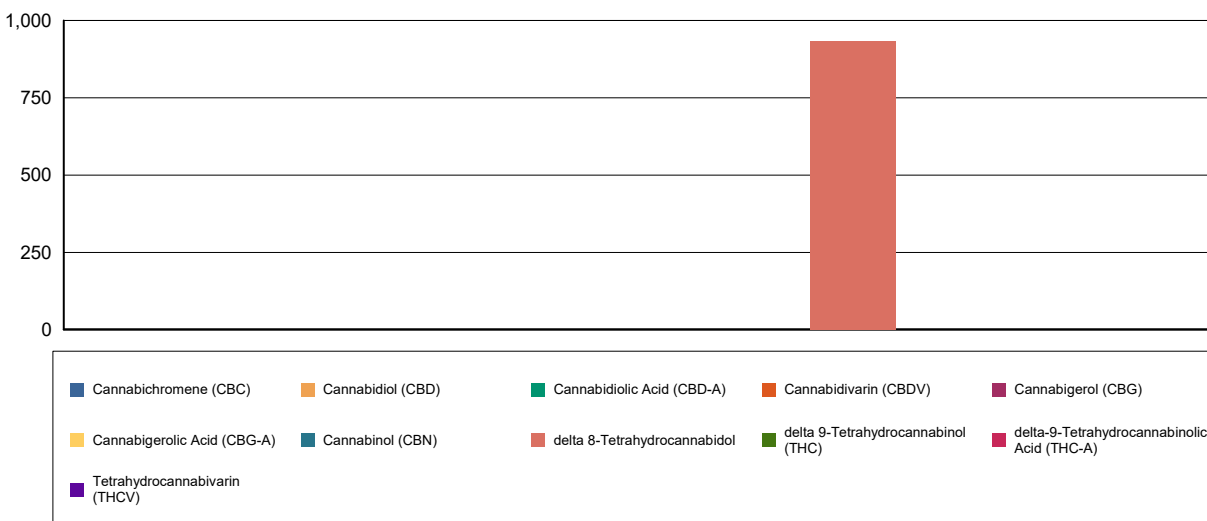
Extraction Technician: DF
Analytical Chemist: SH

Extraction Date(s)	Analysis Date(s)
12/8/2020	12/8/2020

Cannabinoids (HPLC)		Results	
	LOD (mg/g)	%	mg/g
Cannabidivarin (CBDV)	<0.60		
Cannabidiolic Acid (CBD-A)	<0.60		
Cannabigerolic Acid (CBG-A)	<0.60		
Cannabigerol (CBG)	<0.60		
Cannabidiol (CBD)	<0.60		
Tetrahydrocannabivarin (THCV)	<0.60		
Cannabinol (CBN)	<0.60		
delta 9-Tetrahydrocannabinol (THC)	<0.60		
delta 8-Tetrahydrocannabinol		93.10	931
Cannabichromene (CBC)	<0.60		
delta-9-Tetrahydrocannabinolic Acid (THC-A)	<0.60		
Cannabinoids Total		%	mg/g
Max Active THC		0.00	0.00
Max Active CBD		0.00	0.00
T.Active Cannabinoids		0.00	0.00
Total Cannabinoids		93.10	931.00

Following USDA guidelines on uncertainty, Altitude Consulting's uncertainty are calculated for CBDa and CBD at +/- 4%. The uncertainty for THCa and THC are +/- 5%. This implies the range for a 10% value of CBD to be 9.6-10.4%. The uncertainty range for a 0.30% value of THC would be 0.28-0.32%. The measurement uncertainty is calculated using a coverage factor of 2.

Cannabinoid (mg/g)



Reporting Limits will vary based on sample extraction weight used for the analysis.

Altitude Consulting, LLC utilizes NIST traceable Reference Standards and Certified Reference Material to calibrate analytical instruments along with proven analytical methods. The methods are applied in the most ethical manner following good laboratory practice guidelines. The results of this report are based solely on the sample submitted and cannot be reproduced.



Customer: **8DELTA8**
Customer Sample ID: **.5g Disposable - Grand Daddy Purp**
Laboratory Number: **21K0661-15**



Cannabinoid Profile

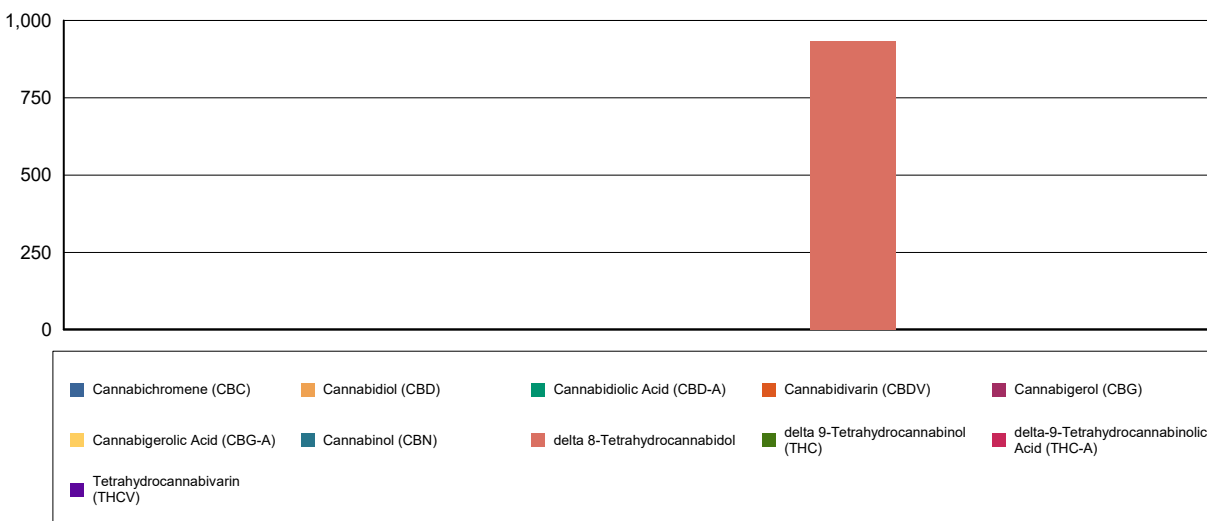
Extraction Technician: DF
Analytical Chemist: SH

Extraction Date(s)	Analysis Date(s)
12/8/2020	12/8/2020

Cannabinoids (HPLC)		Results	
	LOD (mg/g)	%	mg/g
Cannabidivarin (CBDV)	<0.70		
Cannabidiolic Acid (CBD-A)	<0.70		
Cannabigerolic Acid (CBG-A)	<0.70		
Cannabigerol (CBG)	<0.70		
Cannabidiol (CBD)	<0.70		
Tetrahydrocannabivarin (THCV)	<0.70		
Cannabinol (CBN)	<0.70		
delta 9-Tetrahydrocannabinol (THC)	<0.70		
delta 8-Tetrahydrocannabinol		92.77	928
Cannabichromene (CBC)	<0.70		
delta-9-Tetrahydrocannabinolic Acid (THC-A)	<0.70		
Cannabinoids Total		%	mg/g
Max Active THC		0.00	0.00
Max Active CBD		0.00	0.00
T.Active Cannabinoids		0.00	0.00
Total Cannabinoids		92.80	928.00

Following USDA guidelines on uncertainty, Altitude Consulting's uncertainty are calculated for CBDa and CBD at +/- 4%. The uncertainty for THCa and THC are +/- 5%. This implies the range for a 10% value of CBD to be 9.6-10.4%. The uncertainty range for a 0.30% value of THC would be 0.28-0.32%. The measurement uncertainty is calculated using a coverage factor of 2.

Cannabinoid (mg/g)



Reporting Limits will vary based on sample extraction weight used for the analysis.

Altitude Consulting, LLC utilizes NIST traceable Reference Standards and Certified Reference Material to calibrate analytical instruments along with proven analytical methods. The methods are applied in the most ethical manner following good laboratory practice guidelines. The results of this report are based solely on the sample submitted and cannot be reproduced.