



## Industrial Hemp Farms

Denver, CO 80216  
 jack@industrialhempfarms.com  
 (913) 991-8022

## Sample 280-072221-157

Fortified Trainwreck  
 Batch/Lot # 0726IHF21

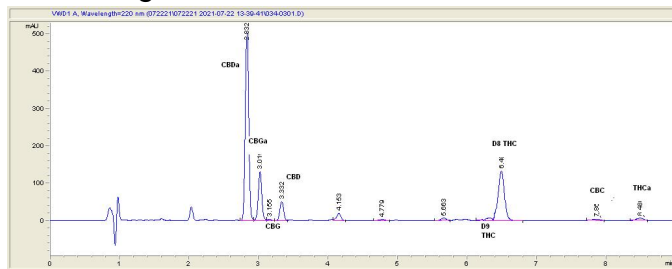
Sample Submitted: 07-22-2021; Report Date: 07-23-2021

## Fortified Trainwreck

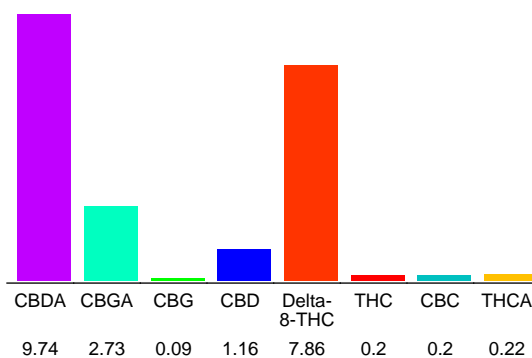
Plant Material: Flower

Batch/Lot # 0726IHF21

### Chromatogram



### Cannabinoid Profile



### Cannabinoid Profile by HPLC

**0.39%**  
 Calculated THC Yield

**9.70%**  
 Calculated CBD Yield

**22.20%**  
 Total Cannabinoids

Cannabinoid	% wt	mg/g
CBDA	9.74	97.4
CBGA	2.73	27.3
CBG	0.09	0.9
CBD	1.16	11.6
Delta-8-THC	7.86	78.6
THC	0.2	2.0
CBC	0.2	2.0
THCA	0.22	2.2
<b>Total Cannabinoids</b>	<b>22.20</b>	<b>222.0</b>
<b>Calculated THC Yield</b>	<b>0.39</b>	<b>3.93</b>
<b>Calculated CBD Yield</b>	<b>9.70</b>	<b>97.02</b>

Calculated Maximum THC Yield = THC + 0.877 \* THCA  
 Calculated Maximum CBD Yield = CBD + 0.877 \* CBDA

### Marin Analytics, LLC

250 Bel Marin Keys Blvd, Suite D4  
 Novato, CA 94949

415-936-6477 / sarabiancalana1@gmail.com

**Sara Biancalana**  
 Chief Scientist

This sample has been tested by Marin Analytics, LLC using valid testing methodologies and a quality system. Values reported relate only to the sample tested. Marin Analytics, LLC makes no claims as to the efficacy, safety or other risks associated with any detected or non-detected levels of any compounds reported herein. This Certificate shall not be reproduced except in full, without the written approval of Marin Analytics, LLC.