

PharmLabs San Diego Certificate of Analysis

3421 Hancock St, Second Floor, San Diego, CA 92110 | License: C8-000098-LIC  
 ISO/IEC 17025:2017 Certification L17-427-1 | Accreditation #85368



Sample **Fortified Electra 052205FE**

Sample ID	SD210507-028 (42556)	Matrix	Flower (Inhalable Cannabis Good)
Distributor License	002YFK	Address	480 E 58th Avenue, Denver, CO 80216
Sampled	-	Received	May 07, 2021
Analyses executed	CAN+	Reported	May 08, 2021
		Name	IHF LLC

**\*CAN+ - Cannabinoid Profile Analysis**

Analyzed May 08, 2021 | Instrument HPLC-VWD | Method SOP-001  
 Measurement Uncertainty at 95% confidence 7.806%

Analyte	LOD mg/g	LOQ mg/g	Result %	Result mg/g
Cannabidivarin (CBDV)	0.002	0.8	0.04	0.42
Cannabidiolic Acid (CBDA)	0.001	0.012	9.80	97.99
Cannabigerol Acid (CBGA)	0.001	0.012	2.01	20.11
Cannabigerol (CBG)	0.001	0.012	0.08	0.83
Cannabidiol (CBD)	0.001	0.012	0.56	5.56
Tetrahydrocannabivarin (THCV)	0.001	0.012	0.03	0.32
Cannabinol (CBN)	0.001	0.012	0.02	0.16
Tetrahydrocannabinol (Δ9-THC)	0.003	0.012	ND	ND
Δ8-tetrahydrocannabinol (Δ8-THC)	0.004	0.012	5.18	51.76
Cannabicyclol (CBL)	0.002	0.006	ND	ND
Cannabichromene (CBC)	0.002	0.005	0.13	1.33
Tetrahydrocannabinolic Acid (THCA)	0.001	0.012	0.35	3.50
<b>Total THC (THCa * 0.877 + THC)</b>			<b>0.31</b>	<b>3.07</b>
<b>Total CBD (CBDA * 0.877 + CBD)</b>			<b>9.15</b>	<b>91.50</b>
<b>Total CBG (CBGa * 0.877 + CBG)</b>			<b>1.85</b>	<b>18.47</b>
<b>TOTAL CANNABINOIDS</b>			<b>16.70</b>	<b>167.04</b>

\*Dry Weight %

Sample photography



ND Not Detected  
 N/A Not Applicable  
 NT Not Reported  
 LOD Limit of Detection  
 LOQ Limit of Quantification  
 <LOQ Detected  
 >ULOL Above upper limit of linearity  
 CFU/g Colony Forming Units per 1 gram  
 TNTC Too Numerous to Count



Scan the QR code to verify authenticity.

Authorized Signature

Dr. Lia Prevedello, Laboratory Director  
 Sat, 08 May 2021 16:01:47 -0700



## Industrial Hemp Farms

Denver, CO 80216  
 jack@industrialhempfarms.com  
 (913) 991-8022

## Sample 280-062521-133

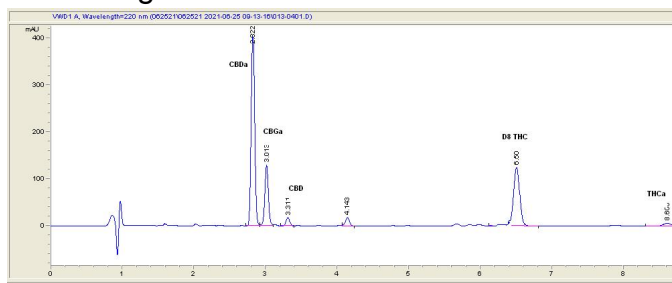
Fortified Elektra  
 Batch/Lot # 0522IHF05  
 Sample Submitted: 06-25-2021; Report Date: 06-26-2021

## Fortified Elektra

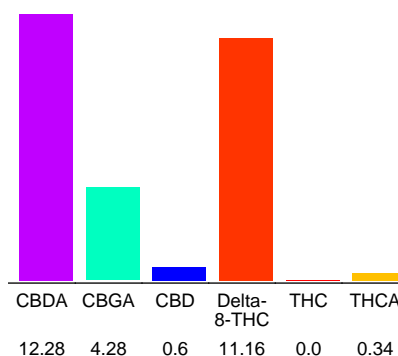
Plant Material: Flower

Batch/Lot # 0522IHF05

### Chromatogram



### Cannabinoid Profile



### Cannabinoid Profile by HPLC

**0.30%**  
 Calculated THC Yield

**11.37%**  
 Calculated CBD Yield

**28.66%**  
 Total Cannabinoids

Cannabinoid	% wt	mg/g
CBDA	12.28	122.8
CBGA	4.28	42.8
CBD	0.6	6.0
Delta-8-THC	11.16	111.6
THC	0.0	0.0
THCA	0.34	3.4
<b>Total Cannabinoids</b>	<b>28.66</b>	<b>286.6</b>
<b>Calculated THC Yield</b>	<b>0.30</b>	<b>2.98</b>
<b>Calculated CBD Yield</b>	<b>11.37</b>	<b>113.70</b>

Calculated Maximum THC Yield =  $THC + 0.877 * THCA$   
 Calculated Maximum CBD Yield =  $CBD + 0.877 * CBDA$

### Marin Analytics, LLC

250 Bel Marin Keys Blvd, Suite D4  
 Novato, CA 94949

415-936-6477 / sarabiancalana1@gmail.com

**Sara Biancalana**  
 Chief Scientist

This sample has been tested by Marin Analytics, LLC using valid testing methodologies and a quality system. Values reported relate only to the sample tested. Marin Analytics, LLC makes no claims as to the efficacy, safety or other risks associated with any detected or non-detected levels of any compounds reported herein. This Certificate shall not be reproduced except in full, without the written approval of Marin Analytics, LLC.