



Customer: Herbal Pharm RX
 Address: 8748 Logan St
 Denver, CO 80228
 Sample ID: THCP Trainwreck Vapo
 Matrix: Concentrate
 Labnumber: 21J8235-01

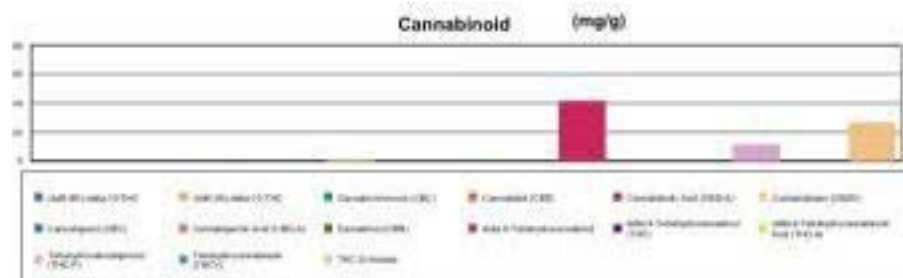
Cannabinoid Profile

Test Conditions: 15°C
 Extraction Technique: SH
 Analytical Chemist: CB

Extraction Date(s)	Analysis Date(s)
10/27/2021	10/28/2021

Cannabinoids (HPLC)		Results	
	LOD (mg/g)	%	mg/g
Cannabidiol (CBD)		0.12	1.16
Cannabidiol Acid (CBD-A)	<0.40		
Cannabigeronic Acid (CBG-A)	<0.40		
Cannabigerol (CBG)	<0.40		
Cannabidiol (CBD)	<0.40		
Tetrahydrocannabinol (THCV)	<0.40		
Cannabinol (CBN)	<0.40		
Cannabichromene (CBC)	<0.40		
delta-9-Tetrahydrocannabinol (THC)	<0.40		
delta-9-Tetrahydrocannabinol: Acid (THC-A)	<0.70		
delta-8-Tetrahydrocannabinol		4.17	41.7
delta-8-THC-delta-10-THC	<0.70		
delta-8-THC-delta-10-THC	<0.70		
THC-O-Acetate		2.69	26.8
Tetrahydrocannabinol (THC-P)		1.15	11.5
Cannabinoids Total		%	mg/g
Max Active THC (delta-9-tetrahydrocannabinol)		<0.04	<0.40
Max Active CBD		0.00	0.00
T.Active Cannabinoids		0.00	0.00
Total Cannabinoids		8.12	81.20

Following USDA guidelines on uncertainty, Altitude Consulting's uncertainty is calculated to be +/- 2% for all cannabinoids using a coverage factor of 2 (95% confidence interval). Measurement uncertainty has not been factored into reported values.
 Blank results indicate the compound was below the limit of detection.




Gary Brook - Laboratory Director - 10/28/2021

Reporting limits will vary based on sample extraction weight used for the analysis.

The results of this report are based solely on the sample submitted and cannot be reproduced. Deviation Rule: Measurement uncertainty is not accounted for in the reported values. Results are based solely on calculated numbers. Altitude Consulting makes no statements of conformity. **Peptide, metal, and microbial analysis are subcontracted to ISO 17025 laboratories.**