



**Customer:** Tyson  
**Address:** 4969 N. Colorado Blvd.  
Denver, CO 80216

**Sample ID:** Tyson Watermelon D9 Lot #:

**Matrix:** Edible

**Labnumber:** 23C0011-01 **Total mass or volume per unit (g or mL):** 4.5665

## Cannabinoid Profile

**Test Conditions:** 17°C

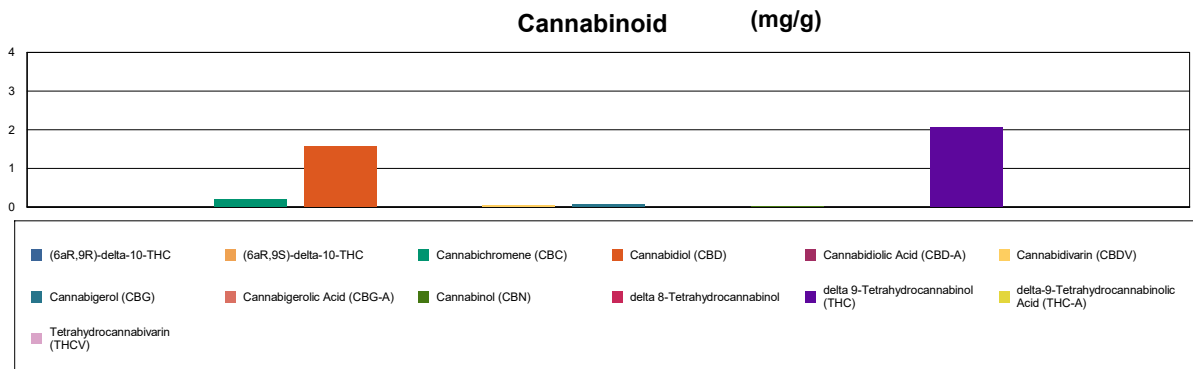
**Extraction Technician:** SH

**Analytical Chemist:** SH

Extraction Date(s)	Analysis Date(s)
3/3/2023	3/3/2023

Cannabinoids (HPLC)	Results			
	LOD (mg/g)	%	mg/g	mg/Gummy
Cannabidiol (CBD)		0.16	1.57	7.16
delta 9-Tetrahydrocannabinol (THC)		0.21	2.06	9.42
Cannabidiol (CBDV)		0.003	0.032	0.145
Cannabidiolic Acid (CBD-A)	<0.030			
Cannabigerolic Acid (CBG-A)	<0.030			
Cannabigerol (CBG)		0.006	0.057	0.258
Tetrahydrocannabivarin (THCV)	<0.030			
Cannabinol (CBN)		0.003	0.028	0.126
Cannabichromene (CBC)		0.02	0.202	0.922
delta-9-Tetrahydrocannabinolic Acid (THC-A)	<0.060			
delta 8-Tetrahydrocannabinol	<0.060			
(6aR,9S)-delta-10-THC	<0.060			
(6aR,9R)-delta-10-THC	<0.060			
<b>Cannabinoids Total</b>		<b>%</b>	<b>mg/g</b>	
Max Active THC (delta-9-tetrahydrocannabinol)		0.21	2.06	
Max Active CBD		0.16	1.57	
Total Cannabinoids		0.40	3.95	

Following USDA guidelines on uncertainty, Altitude Consulting's uncertainty is calculated to be +/- 3% for all cannabinoids using a coverage factor of 2 (95% confidence interval). Measurement uncertainty has not been factored into reported values.  
Blank results indicate the compound was below the limit of detection.



**Gary Brook - Laboratory Director - 3/6/2023**

Reporting Limits will vary based on sample extraction weight used for the analysis.

The results of this report are based solely on the sample submitted and cannot be reproduced. Decision Rule: Measurement uncertainty is not accounted for in the reported values.

Results are based solely on calculated numbers. Altitude Consulting makes no Statements of conformity. **Pesticide, metal, and microbial analyses are subcontracted to ISO 17025 laboratories.**



**Customer:** Tyson  
**Address:** 4969 N. Colorado Blvd.  
Denver, CO 80216

**Sample ID:** Tyson Black Eye Berry D9 Lot #:

**Matrix:** Edible

**Labnumber:** 23C0011-02 **Total mass or volume per unit (g or mL):** 4.7802

## Cannabinoid Profile

**Test Conditions:** 17°C

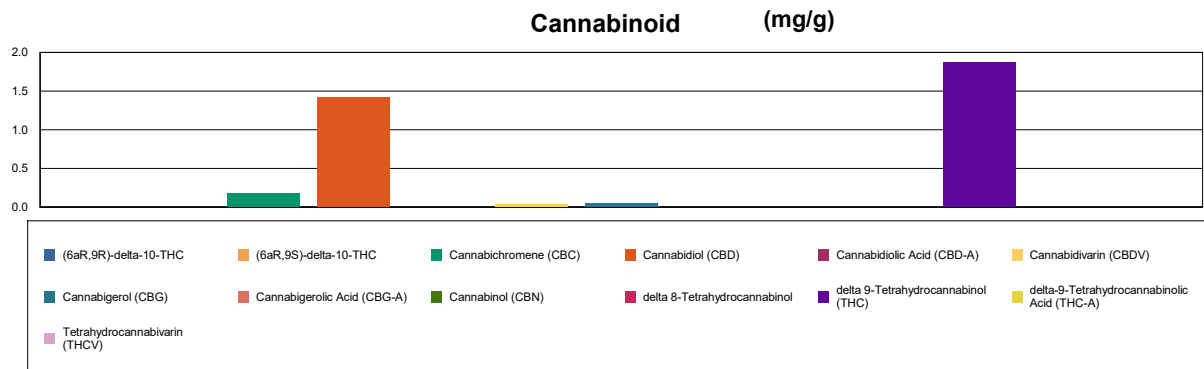
**Extraction Technician:** SH

**Analytical Chemist:** SH

Extraction Date(s)	Analysis Date(s)
3/3/2023	3/3/2023

Cannabinoids (HPLC)	Results			
	LOD (mg/g)	%	mg/g	mg/Gummy
Cannabidiol (CBD)		0.14	1.42	6.78
delta 9-Tetrahydrocannabinol (THC)		0.19	1.87	8.94
Cannabidiol (CBDV)		0.003	0.030	0.145
Cannabidiolic Acid (CBD-A)	<0.030			
Cannabigerolic Acid (CBG-A)	<0.030			
Cannabigerol (CBG)		0.005	0.050	0.237
Cannabichromene (CBC)		0.02	0.178	0.851
Tetrahydrocannabivarin (THCV)	<0.030			
Cannabinol (CBN)	<0.030			
delta 9-Tetrahydrocannabinol (THC)		0.19	1.87	8.94
delta-9-Tetrahydrocannabinolic Acid (THC-A)	<0.070			
delta 8-Tetrahydrocannabinol	<0.070			
(6aR,9S)-delta-10-THC	<0.070			
(6aR,9R)-delta-10-THC	<0.070			
<b>Cannabinoids Total</b>		<b>%</b>	<b>mg/g</b>	
Max Active THC (delta-9-tetrahydrocannabinol)		0.19	1.87	
Max Active CBD		0.14	1.42	
Total Cannabinoids		0.36	3.55	

Following USDA guidelines on uncertainty, Altitude Consulting's uncertainty is calculated to be +/- 3% for all cannabinoids using a coverage factor of 2 (95% confidence interval). Measurement uncertainty has not been factored into reported values.  
Blank results indicate the compound was below the limit of detection.

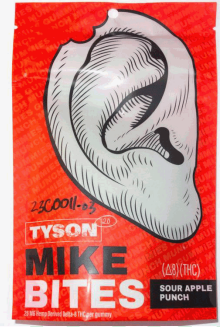


**Gary Brook - Laboratory Director - 3/6/2023**

Reporting Limits will vary based on sample extraction weight used for the analysis.

The results of this report are based solely on the sample submitted and cannot be reproduced. Decision Rule: Measurement uncertainty is not accounted for in the reported values.

Results are based solely on calculated numbers. Altitude Consulting makes no Statements of conformity. **Pesticide, metal, and microbial analyses are subcontracted to ISO 17025 laboratories.**



**Customer:** Tyson  
**Address:** 4969 N. Colorado Blvd.  
Denver, CO 80216

**Sample ID:** Tyson Sour Apple Punch D9 Lot #:  
**Matrix:** Edible  
**Labnumber:** 23C0011-03

Total mass or volume per unit (g or mL): 4.1959

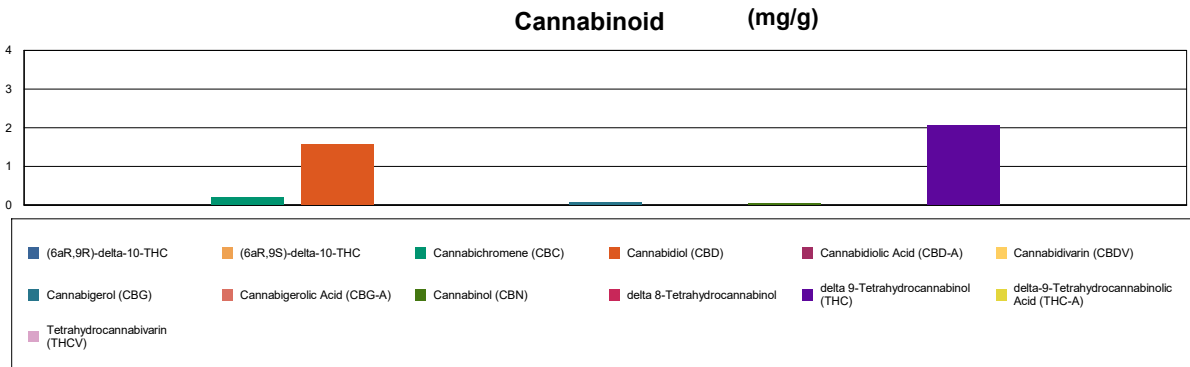
## Cannabinoid Profile

**Test Conditions:** 17°C  
**Extraction Technician:** SH  
**Analytical Chemist:** SH

Extraction Date(s)	Analysis Date(s)
3/3/2023	3/3/2023

Cannabinoids (HPLC)	Results			
	LOD (mg/g)	%	mg/g	mg/Gummy
Cannabidivarin (CBDV)	<0.040			
Cannabidiolic Acid (CBD-A)	<0.040			
Cannabigerolic Acid (CBG-A)	<0.040			
Cannabigerol (CBG)		0.006	0.057	0.240
Cannabidiol (CBD)		0.16	1.57	6.59
Tetrahydrocannabivarin (THCV)	<0.040			
Cannabinol (CBN)		0.004	0.037	0.153
Cannabichromene (CBC)		0.02	0.197	0.828
delta 9-Tetrahydrocannabinol (THC)		0.21	2.07	8.67
delta-9-Tetrahydrocannabinolic Acid (THC-A)	<0.080			
delta 8-Tetrahydrocannabinol	<0.080			
(6aR,9S)-delta-10-THC	<0.080			
(6aR,9R)-delta-10-THC	<0.080			
<b>Cannabinoids Total</b>		<b>%</b>	<b>mg/g</b>	
Max Active THC (delta-9-tetrahydrocannabinol)		0.21	2.07	
Max Active CBD		0.16	1.57	
Total Cannabinoids		0.39	3.93	

Following USDA guidelines on uncertainty, Altitude Consulting's uncertainty is calculated to be +/- 3% for all cannabinoids using a coverage factor of 2 (95% confidence interval). Measurement uncertainty has not been factored into reported values.  
Blank results indicate the compound was below the limit of detection.



**Gary Brook - Laboratory Director - 3/6/2023**

Reporting Limits will vary based on sample extraction weight used for the analysis.

The results of this report are based solely on the sample submitted and cannot be reproduced. Decision Rule: Measurement uncertainty is not accounted for in the reported values. Results are based solely on calculated numbers. Altitude Consulting makes no Statements of conformity. Pesticide, metal, and microbial analyses are subcontracted to ISO 17025 laboratories.